


WGM "ON-SITE/OFF-SITE" FLOW

	MONDAY	TUESDAY	WEDNESDAY	THURSDAY	FRIDAY
In-Class (15 students)	K-8	K-8	K-8	K-8	K-8
Ferrysburg Room 6 (15 students)	April's Class	Jessica's Class	April's Class	Jessica's Class	April's Class
Ferrysburg Room 13 (15 students)	Junie's Class	Michelle's Class	Junie's Class	Michelle's Class	Junie's Class
East Forest (15 students)	Jessica's Class	April's Class	Michelle's Class	Junie's Class	Stephanie's Class
West Forest (15 students)	Michelle's Class	Junie's Class	Jessica's Class	April's Class	Christina's Class
North Meadow (15 students)	Stephanie's Class	Laura's Class	Christina's Class	Beth's Class	Michelle's Class
South Meadow (15 students)	Christina's Class	Beth's Class	Stephanie's Class	Laura's Class	Jessica's Class
Ferrysburg Gym (up to 30 students)	7/8 (12:00-3:30 PM)	4/5	7/8	4/5	7/8 (12:00-3:30 PM)
Contingencies	During inclement weather: 2/3 + 4/5 = Ferrysburg Gym in PM (instead of Forest/Meadow) 7/8 = Art Corner + Great Room (instead of Ferrysburg Gym) OR utilize classrooms if needed	During inclement weather: K/1 = Ferrysburg Gym (instead of Forest) 7/8 = Art Corner + Great Room (instead of Meadow) OR utilize classrooms if needed	During inclement weather: 2/3 + 4/5 = Ferrysburg Gym (instead of Forest/Meadow) 7/8 = Art Corner + Great Room (instead of Ferrysburg Gym) OR utilize classrooms if needed	During inclement weather: K/1 = Ferrysburg Gym (instead of Forest) 7/8 = Art Corner + Great Room (instead of Meadow) OR utilize classrooms if needed	During inclement weather: 2/3 + 4/5 = Ferrysburg Gym in PM (instead of Forest/Meadow) 7/8 = Art Corner + Great Room (instead of Ferrysburg Gym) OR utilize classrooms if needed

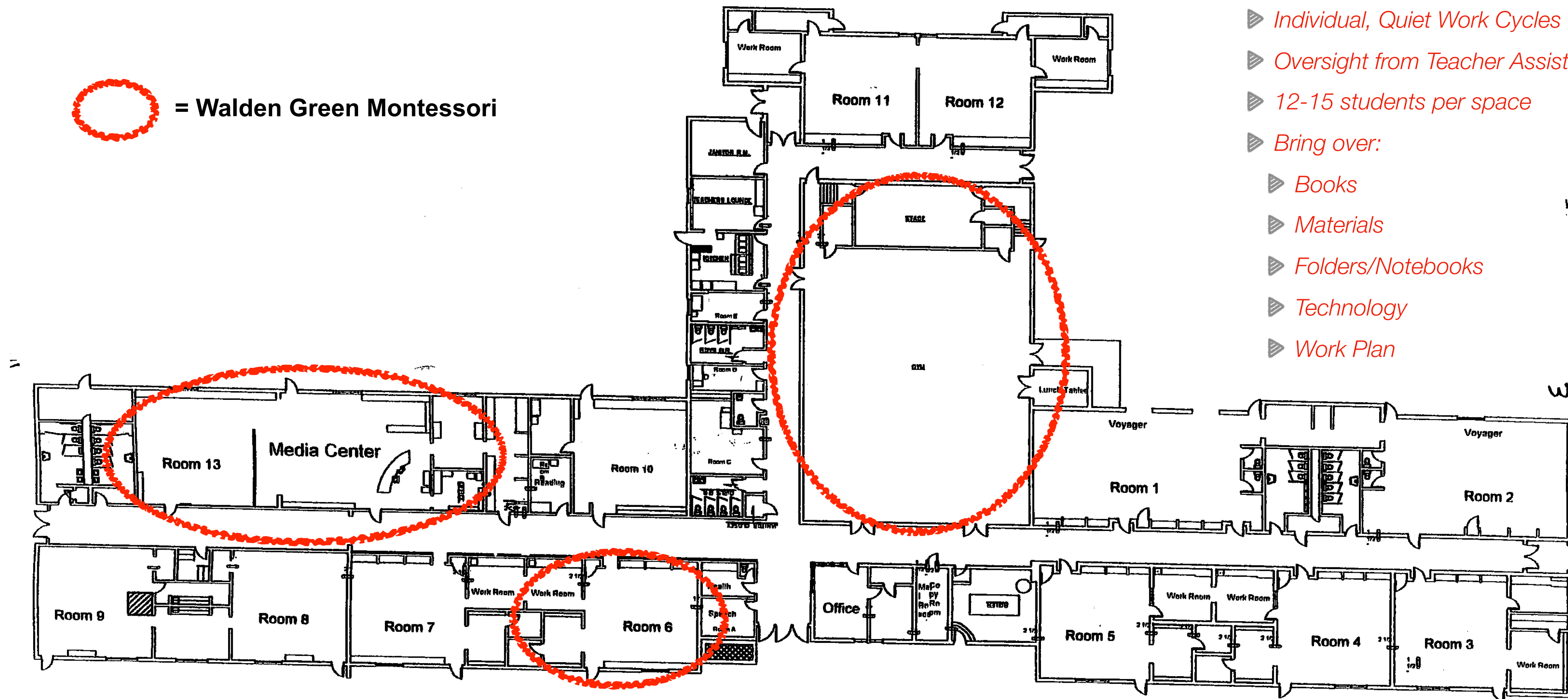
ALTERNATE LEARNING SITE



City of Ferrysburg Building

 = Walden Green Montessori

- ▶ *Music + P.E.*
- ▶ *Social Distancing Workspaces*
- ▶ *Individual, Quiet Work Cycles*
- ▶ *Oversight from Teacher Assistants*
- ▶ *12-15 students per space*
- ▶ *Bring over:*
 - ▶ *Books*
 - ▶ *Materials*
 - ▶ *Folders/Notebooks*
 - ▶ *Technology*
 - ▶ *Work Plan*



Bus Loop